



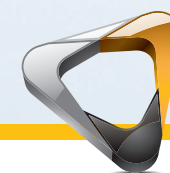
## INTRAORAL SCANNER

### Technical specifications

Components	Technical Specifications
Sensor technology:	1/2 inch CMOS
Illumination:	LED, Amber, Blue, Green
Field of view:	13 x 13 mm
Depth of field:	-2 to + 12 mm
Anti-fogging technology:	Actively heated tip, guaranteed non-fogging operation when used intraorally
Cable length:	2.7 m (1.8 m + 0.9 m)
Digital Connection:	USB 2.0 High Speed
Dimensions without cable:	220 x 38 x 58 mm for normal and side tips
Weight:	325 g (excluding power box)
Handpiece:	Input 12 V $\overline{\text{---}}$ 2A
Power box:	75 x 21 x 21 mm
	Input: 12 V $\overline{\text{---}}$ 2A Output: 12 V $\overline{\text{---}}$ 2A
Adapter:	Input: 100-240V ~ 50/60Hz, 600 mA
	Output: 12V $\overline{\text{---}}$ 2A



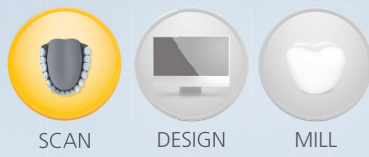
CS 3600



### Would you like to know more?

Call 800.944.6365 or visit [www.carestreamdental.com/solutions](http://www.carestreamdental.com/solutions) for information about the CS 3600.

SCAN SMARTER  
EASIER. FASTER. OPEN.



## A **SPEEDIER, SMARTER, SMOOTHER** SCANNER

**High-Speed Continuous Scanning:** The CS 3600's unique continuous scanning capabilities significantly reduce the time it takes to acquire a scan. Your patients spend less time in the chair while you easily acquire all the essential data you need to create an impression in record time.

- Scan in a smooth, uninterrupted pattern
- Quickly and easily acquire dual arch scans
- Eliminate the impact of unsteady hands or fidgeting patients between successive views for more accurate digital impressions
- A broad focal range provides the flexibility you need while scanning
- Acquire optimal scans without having to keep the scanner at a fixed distance

**Any Time, Anywhere Matching:** With the Intelligent Matching System, freely complete any missing data in any area at any time.

- Jump to any position in the mouth at any point in the scanning process to fill in missing information
- No need to indicate an exact location to the system—simply move and scan

## FEATURES TO MAKE YOUR PATIENTS **(AND YOU)** SMILE

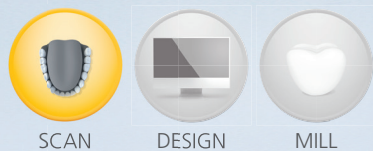
### **Different Scans Require Different Tips:**

Two rounded, interchangeable tips in different orientations help you capture scans in hard-to-reach areas while still considering patient comfort.

- Both tips are autoclavable to support infection control and can be used up to 20 times
- The innovative side oriented tip offers the shortest available height among scanners with autoclavable tips

**Show and Tell in HD 3D:** Full HD 3D color images offer enhanced image quality with more vivid color and texture for better doctor/patient communication and increased case acceptance.

- 3D HD color better reflects the reality of the in-vivo situation
- Stunning, highly-detailed images provide the precise detail needed for effective automatic or manual margin line identification
- Convenient CS MeshViewer improves communication with laboratories and referrals



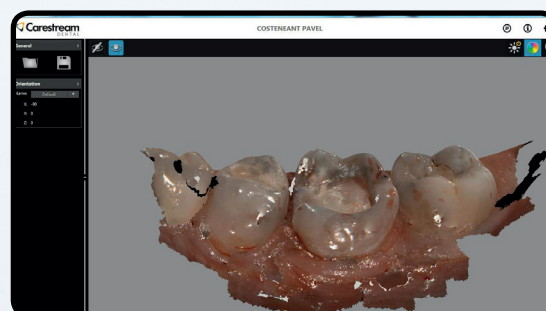
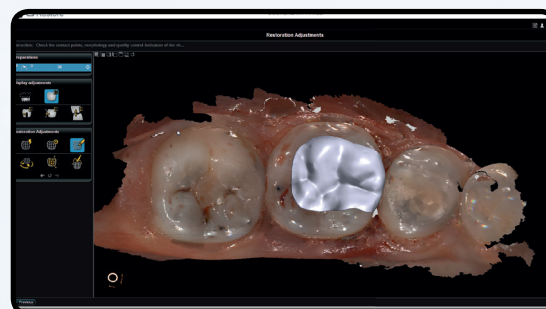
## ONE SCANNER, THREE WORKFLOWS

The CS 3600 features dedicated workflows for restorative, orthodontic and implant-borne restorative cases.

## RESTORE LIKE NEVER BEFORE

Use the scanner as a standalone solution and send scans to the lab of our choice, or integrate with CS Solutions CAD/CAM restoration portfolio.

- Minimize the amount of time spent scanning the patient's mouth with quadrant scanning
- Automated 3D margin line provides better precision
- CS Restore software lets you design restorations in-office
- Open .STL and .PLY files allow you to use third-party design software



## REINVENT YOUR ORTHODONTICS

Quickly and easily create digital models for study or for use in fabrication of appliances.

- Optimize full and dual arch scanning
- Simplify bite registration with little to no manipulation
- Save time, money and space with CS Model software
  - Automatically create model bases and trims
  - Aid treatment planning by viewing models from every possible angle
  - Integrate easily with Carestream Dental or other leading orthodontic imaging and DPMS systems





SCAN



DESIGN



MILL



## MAKE FRIENDS WITH **YOUR LAB**

The open architecture of the CS 3600 makes sharing files with the lab of your choice simple and straightforward, for clearer communication and faster turnaround.

- Identify margin lines, contact points, and undercuts on 3D HD images before sending to the lab
- Increase efficiency and precision by using the 3D margin line tool
- Capture .STL and .PLY files and easily share them with any lab that accepts digital impressions
- Transfer files via a secure internet portal for faster turnaround
- Avoid “drags,” “pulls” or “voids” for repeatable quality

## IMPLANT PLANNING MADE EASY

A dedicated workflow designed specifically for implant-borne restorative scanning, supported abutments and scan bodies.

- Minimize confusion and reduce learning curves with intuitive software that guides you throughout the entire scan process
- Simplify image acquisition and editing while providing maximum comfort to the patient with the smart cutting tool—remove only the areas that require rescanning
- Find the view that best fits your needs with split-screen viewing to conduct side-by-side comparison of the digital impressions with and without the scan bodies/abutments in place
- Compatible with open system implant planning and surgical guide software

